

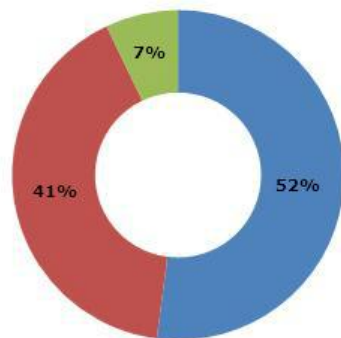


# Insulation

Paint & Coatings

# What is insulation?

Material to prevent spread of heat, sound, electrical energy



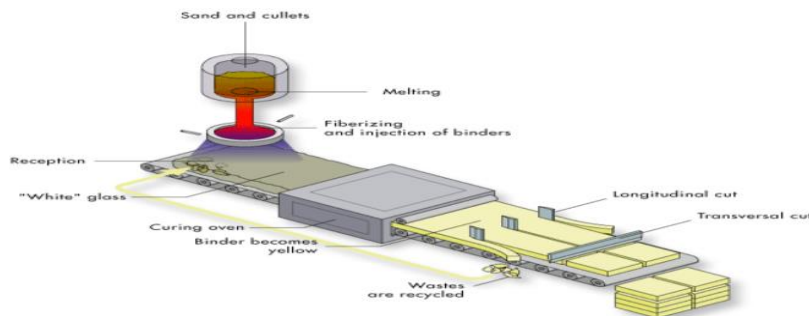
- Wool
- Plastic foams
- Others

## Basic Material

Stonewool  
Glasswool  
Perlite  
Vermiculite  
Ca silicate  
Natural fibre

# Insulation fibre manufacture

- Glass or stone feedstock melted via furnace route
- Melt' extruded through spinners to make fibres
- Organic binder is sprayed to develop bonded fibres
- Binder contains:
  - BRB Sempure: Emulsion water repellent
  - BRB Silanil: Silane adhesion promotor
  - Adhesive resin, reactants, catalysts & water



# Types of insulation



- Bonded fibre slabs



- Bonded rolls

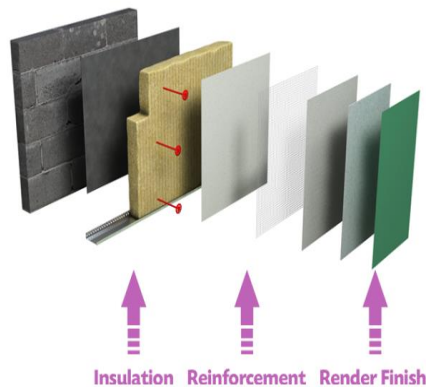


- Unbonded loose fill

# BRB Products for bonded glass and stone slabs



External Wall Insulation – Key Components



- Silane adhesion promotor
  - BRB Silanil 176
  - BRB Silanil 919
  - BRB Silanil 581
  
- Water repellency
- *PF/ low formaldehyde binder:*
  - BRB Sempure SW4
  - BRB Sempure 1814
- *Carbohydrate binder:-*
  - BRB Sempure HJS
  
- Hot-end conveyor release
  - BRB Sempure 60
  
- Wash-water defoamer
  - BRB Snapsil TG10

# BRB products for bonded glass rolls



- Silane adhesion promotor
  - BRB Silanil 176
  - BRB Silanil 919
  - BRB Silanil 581
- Water repellency / Roll recovery
- *PF/ low formaldehyde binder:-*
  - BRB Sempure SW4
  - BRB Sempure 1814
- *Carbohydrate binder:-*
  - BRB Sempure HJS
- Hot-end conveyor release
  - BRB Sempure 60
- Wash-water defoamer
  - BRB Snapsil TG10

# BRB products for glass-fibre loose-fill



- Water repellency
  - BRB Sempure HY43
  - BRB Sempure 379
  - BRB SN150
- Hot-end conveyor release
  - BRB Sempure 60
- Wash-water defoamer
  - BRB Snapsil TG10





# The powerful shield

BRB International BV

Europastraat 5  
NL-6014 CD Ittervoort  
The Netherlands

info@brbbv.com  
+31 475 560 300  
brb-international.com



BRB has more than 10 locations worldwide from which we supply our markets and meet our customer's needs. Get in contact with us by scanning this code.